

# ESSENTIAL

MARVIN ESSENTIAL™ COLLECTION




**Marvin Essential collection**

## DESIGN AND PERFORMANCE, MADE EASIER

Characterized by clean lines, powerful performance, and streamlined options, the Marvin Essential collection makes it easier to achieve design and quality. Essential features durable Ultrex® fiberglass interiors and exteriors, making it virtually maintenance free.

**About Us**

At Marvin, we're driven to imagine and create better ways of living, helping people feel happier and healthier inside their homes. We believe that our work isn't just about designing better windows and doors—it's about opening new possibilities for the people who use them.



Casement, Picture, and Awning windows in Ebony



Direct Glaze windows in Ebony

## TABLE OF CONTENTS

3	MARVIN ESSENTIAL COLLECTION
6	WHY MATERIALS MATTER
8	ENERGY EFFICIENCY
10	PRODUCTS + OPTIONS
12	WINDOWS AND DOORS
14	DESIGN OPTIONS
16	HARDWARE
18	INSTALLATION
19	EXTERIOR

# WHY MATERIALS MATTER

## THE MARVIN MATERIALS DIFFERENCE: ULTREX® FIBERGLASS

Choosing the right materials for windows and doors is important when it comes to long-term appearance and performance. Ultrex, an innovative fiberglass material pioneered by Marvin over 25 years ago, was one of the first premium composites on the market. However, not all composites are created equal.

Some companies use materials with fundamentally different properties and performance values to produce a composite material. But, Ultrex is different. High density woven fibers bound by a thermally set resin makes Ultrex more resistant to pressure and temperature than vinyl-based composites. With such different materials grouped in the composites category, it becomes important to know what sets them apart.



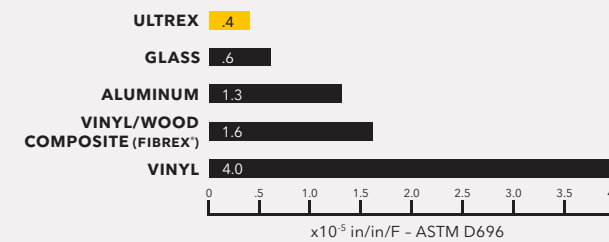
## TEMPERATURES MAY FLUCTUATE, BUT ULTREX FIBERGLASS WON'T

Ultrex expands and contracts at virtually the same rate as glass, so it works with glass rather than against it. This means seals aren't as prone to leaking, and windows aren't subjected to sagging issues like other composites.

This is especially true when compared to vinyl, which can distort in extreme heat and crack in fluctuating temperatures. Ultrex resists distortion even at temperatures up to 285°F. Rapid temperature change doesn't phase Ultrex. From -30°F to 70°F, a 6-foot stile changes less than 1/32 inch in length.

### EXPANSION MEASUREMENT

Ultrex expands and contracts at virtually the same rate as glass.

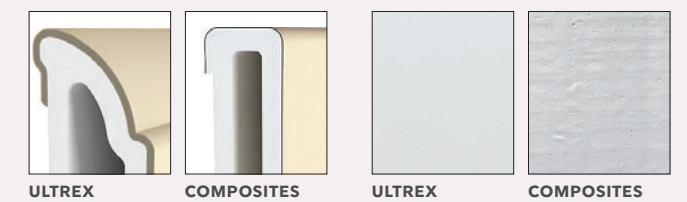


## INDUSTRY'S BEST FIBERGLASS FINISH FOR LASTING BEAUTY

Ultrex was the first and only fiberglass finish to be verified to AAMA's 624 voluntary finish specifications for fiber reinforced thermoset profiles (fiberglass).

Windows and doors made with Ultrex resist scratches, dings, and marring more than vinyl. Our proprietary, mechanically bonded acrylic finish is up to three times thicker than painted competitive finishes, and it resists UV degradation up to five times longer than vinyl—even on dark colors.

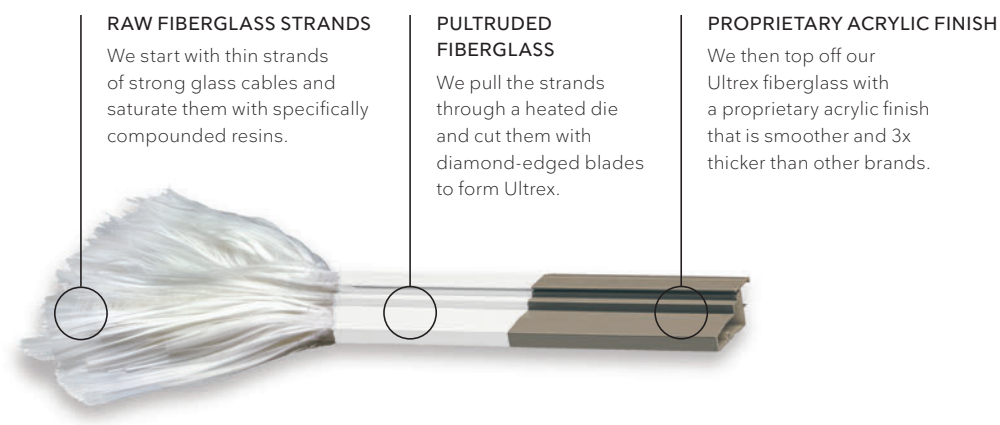
### ACRYLIC CAP



## STRENGTH AND STABILITY OF ULTREX

Ultrex pultruded fiberglass has a tensile strength 8x stronger than vinyl and 3x stronger than non-fiberglass vinyl/wood composites. Windows and doors made with Ultrex bend and flex less, resist cracking and separating, and stand up better to everyday wear and tear.

The exceptional strength and stability of Ultrex eases installation and establishes a secure, long-lasting fit that stays square and true, year after year.



Double Hung windows in Stone White

## COOLER IN SUMMER, WARMER IN WINTER

### TOP RATED ENERGY EFFICIENCY

The National Fenestration Rating Council (NFRC) defines energy performance ratings for the entire window and door industry. It rates:

- **U-factor:** How well a window keeps heat inside a building.
- **Solar heat gain:** A window's ability to block warming caused by sunlight.
- **Visible light transmittance:** How much light gets through a product.
- **Air leakage:** Heat loss and gain by air infiltration through cracks in the window assembly.

Ultrax® fiberglass is 500 times less conductive than roll-form aluminum, more similar to wood and PVC. It provides an insulated barrier against extreme weather temperatures, keeping homes comfortable and reducing heating and cooling costs.

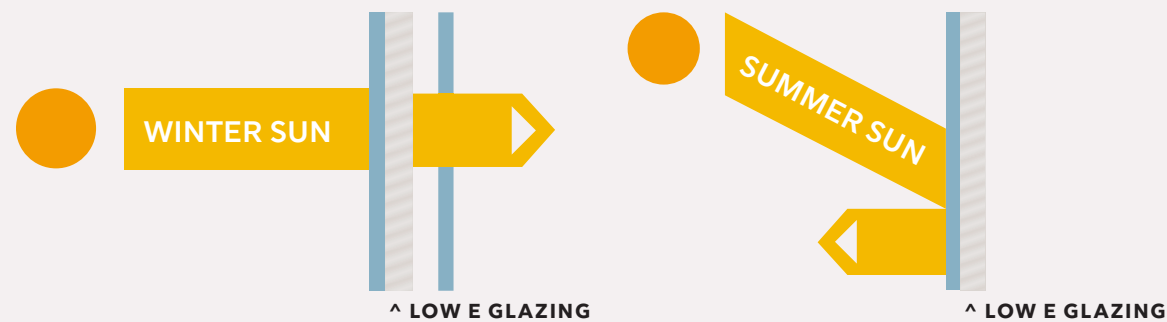
### ENERGY COST SAVINGS

Marvin was the first major window and door manufacturer to offer energy-efficient Low E2 glass and ENERGY STAR® certified performance on all of our standard windows and doors. Compared to non-certified products, ENERGY STAR certified windows and doors cut heating and cooling costs by 12%.\*

The Essential collection offers Low E1, Low E2, Low E3, and Low E3/ERS insulated glass with argon gas, which has thermal conductivity 30% lower than that of air. It adds improved solar and thermal protection by distinguishing between visible light, damaging UV, and near-infrared rays to offer the ultimate glass performance. And Essential provides a selection of energy-efficient solutions depending on your climate and needs.

### LOW E GLASS COATING

The Low E coating is specially designed to take advantage of the angle of the winter and summer sun. Winter sun is absorbed and conducted indoors. Summer sun is filtered and reflected back outdoors.



Double Hung windows in Stone White

## A MORE COMFORTABLE INTERIOR, REGARDLESS OF THE SEASON

Keep heat inside during cooler weather and block the sun's rays during warmer weather with dual-pane windows and Low E coating.

Marvin Essential collection

# PRODUCTS + OPTIONS



Essential Casement and Direct Glaze windows in Ebony and Elevate Sliding French door in Designer Black

# WINDOW + DOOR PRODUCTS



Casement Windows in Ebony

## STYLE AND DURABILITY

Available with custom sizes, a variety of interior and exterior finish options, exterior trim, divided lites, and hardware options, the Marvin Essential products are designed to blend seamlessly with any style. The narrow frames and clean lines provide a great contemporary feel and the strength of Ultrex® helps ensure windows and doors stay true and operate effortlessly for years to come.



CASEMENT + AWNING



SINGLE HUNG



DOUBLE HUNG



GLIDER



SPECIALTY SHAPES



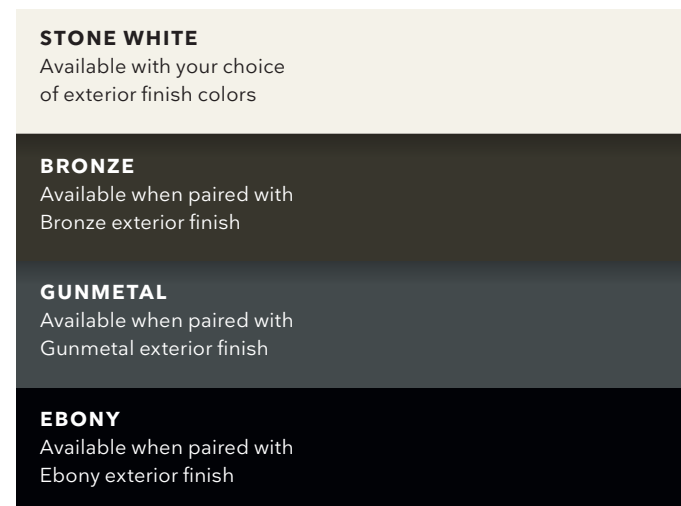
SLIDING PATIO DOOR

# DESIGN OPTIONS

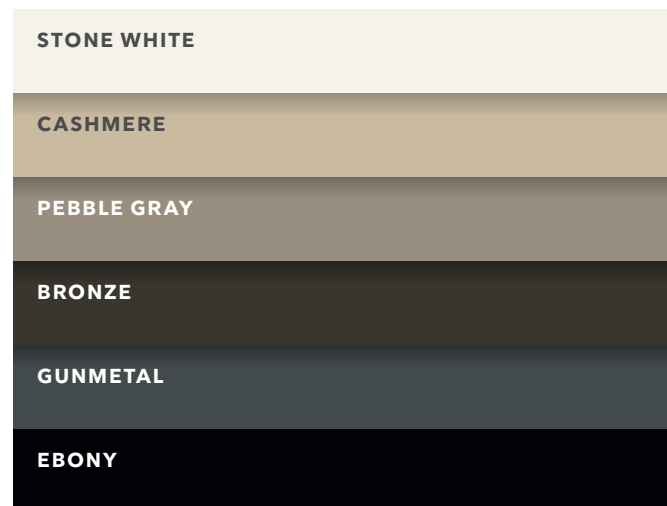
## INTERIOR AND EXTERIOR FINISHES

Essential windows and doors have a durable, strong, and fully paintable Ultrex® fiberglass interior and exterior, featuring our AAMA-verified acrylic finish for low-maintenance and superior aesthetics.

### FIBERGLASS INTERIOR COLORS



### FIBERGLASS EXTERIOR COLORS



## DIVIDED LITES

**GRILLES-BETWEEN-THE-GLASS (GBG)**  
Available in several popular lite cut options for a classic divided lite look and easy glass cleaning. Available in Stone White, Bronze, Gunmetal or Ebony interior finish and Stone White, Cashmere, Pebble Gray, Bronze, Gunmetal, or Ebony exterior finish.\*

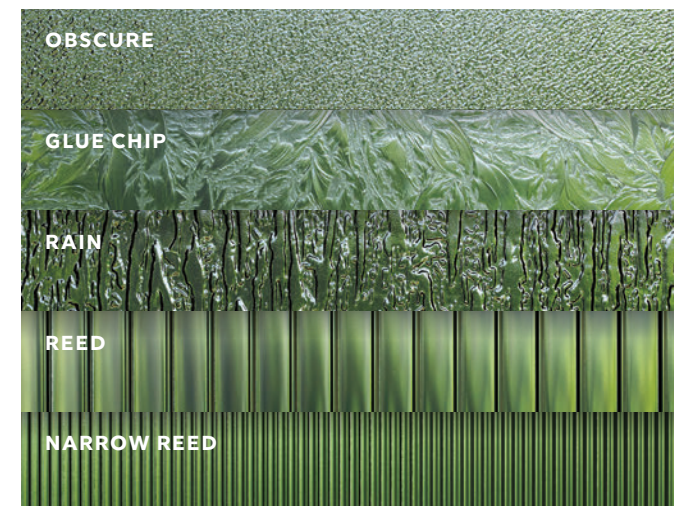


GRILLES-BETWEEN-THE-GLASS SHOWN IN STONE WHITE

## GLASS OPTIONS

Glass is available with Dual Pane. Available with Low E1, Low E2, Low E3, and Low E3/ERS insulated glass with argon gas.\* Options include glazing for sound abatement (STC/OITC), high altitudes, and California fire zones.

### DECORATIVE GLASS



Casement window with Low E2 glass

\* Not available in polygons except direct glaze rectangles.

\* Argon gas not available in high elevations where capillary tubes are required.



# HARDWARE STYLES

## WINDOW HARDWARE

Windows feature classic, low-profile, durable hardware for clean aesthetics, safety, and security.



**SASH LOCK + KEEPER**

Double Hung, Single Hung, and Glider



**FOLDING HANDLE**

Casement and Awning

## DOOR HANDLE

Sliding Patio Doors feature classic profile durable hardware, a perfect blend of safety and security.



**CAMBRIDGE**



**SLIM LINE EXTERIOR HANDLE**

### DOOR HANDLE OPTIONS

- Available keyed-alike option (use one key on multiple locks with up to 3 different keys on each project).
- Choose a distinct interior and exterior handle finish that matches or complements the interior and exterior color of your door.

## FINISHES

**MATTE BLACK**

**OIL RUBBED BRONZE (PVD)**

**ALMOND FROST**

**SATIN NICKEL (PVD)**

**BRASS (PVD)**

**WHITE**



Double Hung window with Sash Lock and Sash Lift in Oil Rubbed Bronze



Double Hung Windows in Stone White

Choose from a variety of hardware finishes to complement your Essential collection windows and doors.

The Physical Vapor Deposition (PVD) process adds a layer of toughness to hardware exposed to environmental factors like direct sun and humidity. PVD finishes resist fading and discoloration, even in coastal areas. PVD has the highest grade corrosion resistant finish.

PVD finish is available on exterior door hardware in Oil Rubbed Bronze, Satin Nickel, and Brass.



Casement Picture windows in Stone White

# INSTALLATION MADE SIMPLE AND EFFICIENT

Marvin Essential™ windows and doors bring together design, quality, and performance in one streamlined collection. Essential products offer a number of installation options and accessories that make it easy to meet project demands.



**FOLDING FIN**  
Snaps out for easy installation.



**FLUSH FIN**  
Use as a replacement solution with stucco siding.\*



**JAMB EXTENSION**  
Allows for easy finishing with traditional molding and trim.



**CASEMENT/AWNING 3"/DOUBLE/SINGLE HUNG SASH LIMITER**  
Permanently limits sash movement for safety and security.



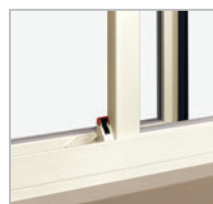
**J-CHANNEL**  
Quickly and easily finishes the exterior.



**NON-OPERABLE LOCK**  
Renders sash inoperable.



**SHEETROCK RETURN**  
Accommodates 1/2"-5/8" drywall installations.



**GLIDER WOOD**  
Limits opening to 4" while providing for full egress. ASTM F2090-10 compliant.



**3/4" RECEIVER**  
Works with thicker installation methods, including box jambs.



**CASEMENT WOOD**  
Limits opening to 4" while providing for full egress. ASTM F2090-10 compliant.



**FRAME EXPANDER**  
Provides installation flexibility.



**DOUBLE/SINGLE HUNG WOOD**  
Limits opening to 4" while providing for full egress. ASTM F2090-10 compliant.

## EXTERIOR TRIM

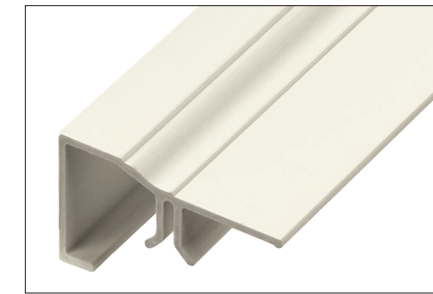
Ultrex® Exterior Trim is offered with all rectangular Marvin Essential products in six exterior finishes. The durability, performance, and look of Essential collection windows and doors can be extended to the trim.

**BRICK MOULD**  
2" Brick Mould is available with or without 2 1/8" sill nosing.

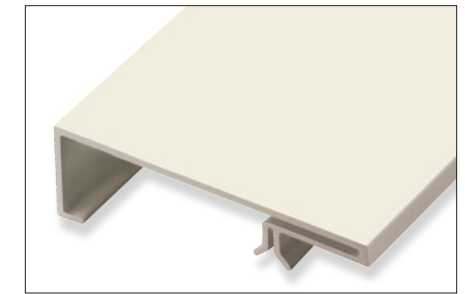
**FLAT**  
3 1/2" Flat Trim is available in Flat and Flat Ranch configurations with or without 2 1/8" sill nosing.

**SILL NOSE**  
2 1/8" Sill Nose provides authentic sill appearance.

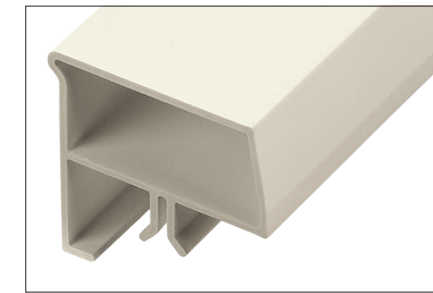
**CONNECTION BARB**  
Barb and receiver attachment method provides for quick, secure installation.



**BRICK MOULD**



**FLAT**



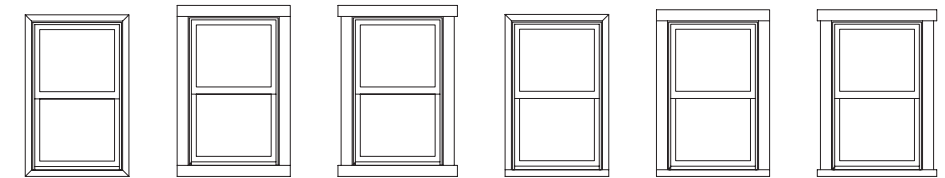
**SILL NOSE**



**CONNECTION BARB**

## TRIM CONFIGURATIONS

Multiple configurations are available in lineal lengths and factory pre-cut kits in all six Essential collection exterior colors.



**BRICK MOULD**

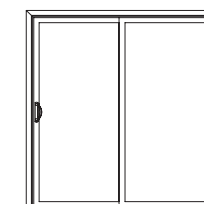
**FLAT**

**FLAT RANCH**

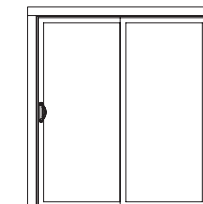
**BRICK MOULD WITH SILL NOSE**

**FLAT WITH SILL NOSE**

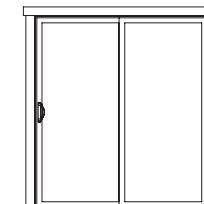
**FLAT RANCH WITH SILL NOSE**



**BRICK MOULD\***



**FLAT\***



**FLAT RANCH\***

## MARVIN HAS YOU COVERED

The Essential collection is backed by a fully transferable 20/10 warranty: 20-year coverage on glass, and 10-year coverage on manufacturing materials and workmanship.



Since 1912, Marvin has been a family-owned and -led company, with a legacy of innovation and commitment to the highest quality. We understand the unique opportunity windows and doors have to improve our spaces and how we feel in them. That's why we never stop pushing what's possible and inventing new solutions to channel fresh air, enhance light quality, and connect with the world around us.

**MARVIN.COM**

©2024 Marvin Lumber and Cedar Co., LLC. All rights reserved.  
®Registered trademark of Marvin Lumber and Cedar Co., LLC.  
ENERGY STAR® and the ENERGY STAR certification mark are registered US marks.

Cover image: Essential Direct Glaze and Casement windows  
Part #19981927. June 2024. [MUT]

Colors shown in printed materials are simulations and may not precisely duplicate product or finish colors. Contact your local Marvin dealer to view actual product and finish color samples.