


haven®  
INSULATED SIDING



THERMAL EFFICIENCY  
**NEVER LOOKED SO GOOD**

 ROYAL® Siding



**LOOKING TO WRAP YOUR HOME IN SOMETHING GORGEOUS, ENERGY EFFICIENT AND LOW MAINTENANCE? HAVEN® INSULATED SIDING IS AS AWESOME AS A HOME EXTERIOR GETS.**

On Cover:  
Haven® D7 In Heather,  
Portsmouth™ Hand-Split Shake In Marine Blue,  
Royal® Insulated Trim In Granite



Haven® D7 In Cypress,  
Haven® Board & Batten In Cypress,  
Royal® Vinyl Trim In White



Haven® D7 In Shamrock,  
Haven® Board & Batten In Shamrock,  
Portsmouth™ Shake In Black Walnut,  
Royal® Vinyl Trim In Cocoa

# BIG CURB APPEAL

MEETS VERY HIGH TECH.

Haven® Insulated Siding is impressive from every angle and on every level. It has the rustically curb appealing look of authentic woodgrain, and the energy efficiency that comes with industry-leading insulation technology.

Haven's EPS foam helps it insulate better than fiber cement, wood, engineered wood or brick. So it has what it takes to keep your home quiet and conquer harsh climates. And it's super durable, which keeps you from spending precious time painting or thinking about siding that warps, buckles or sags.

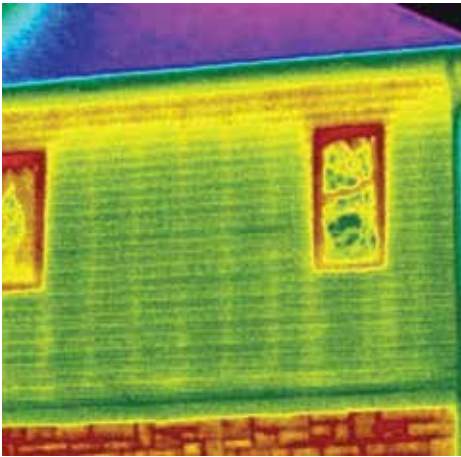
- **Never needs painting**
- **Virtually maintenance free**
- **Helps keep moisture out**
- **Reduces noise by up to 45%**
- **Surprisingly green**
- **Industry-leading Double Lifetime Warranty**



CERTIFICATION PROGRAM

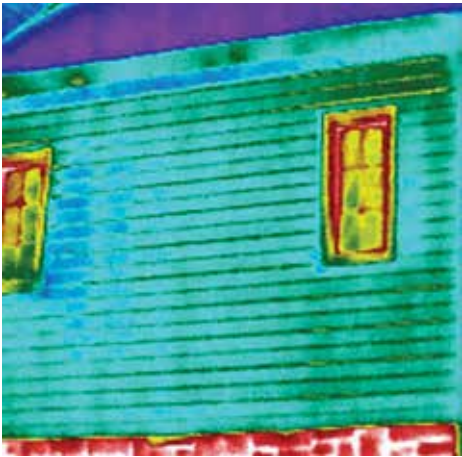
# KEEP HEAT WHERE IT BELONGS **INSIDE YOUR HOME.**

There's a phenomenon called "thermal bridging," in which heat and energy escape through the studs of your home's walls. Haven® Insulated Siding is engineered to dramatically reduce it. The illustrations below give you a good picture of how this all works.



## WITHOUT HAVEN

Framing studs are not insulated, which means heat escapes through them from your home. The yellow area shows how heat transfers through the studs.



## WITH HAVEN

Haven, shown in blue, cuts down on the energy you lose through the studs of your home's walls.

# CONQUER ANY CLIMATE.

Haven® Siding delivers high performance against the elements with hurricane-force wind resistance and Chromatix® technology applied to all Colorscapes® Dark and Premium colors.

- **Designed to withstand hurricane force winds up to 160 mph**
- **EPS foam offers significantly more insulating power than fiber cement, wood, engineered wood or brick**
- **Helps keep moisture out while letting your home breathe**
- **TXL™ Lamination creates a stronger bond for better on-the-wall performance**
- **Premium and Dark colors feature Chromatix® technology color protection**

---

## DEEPEN DESIGN WITH COLOR.

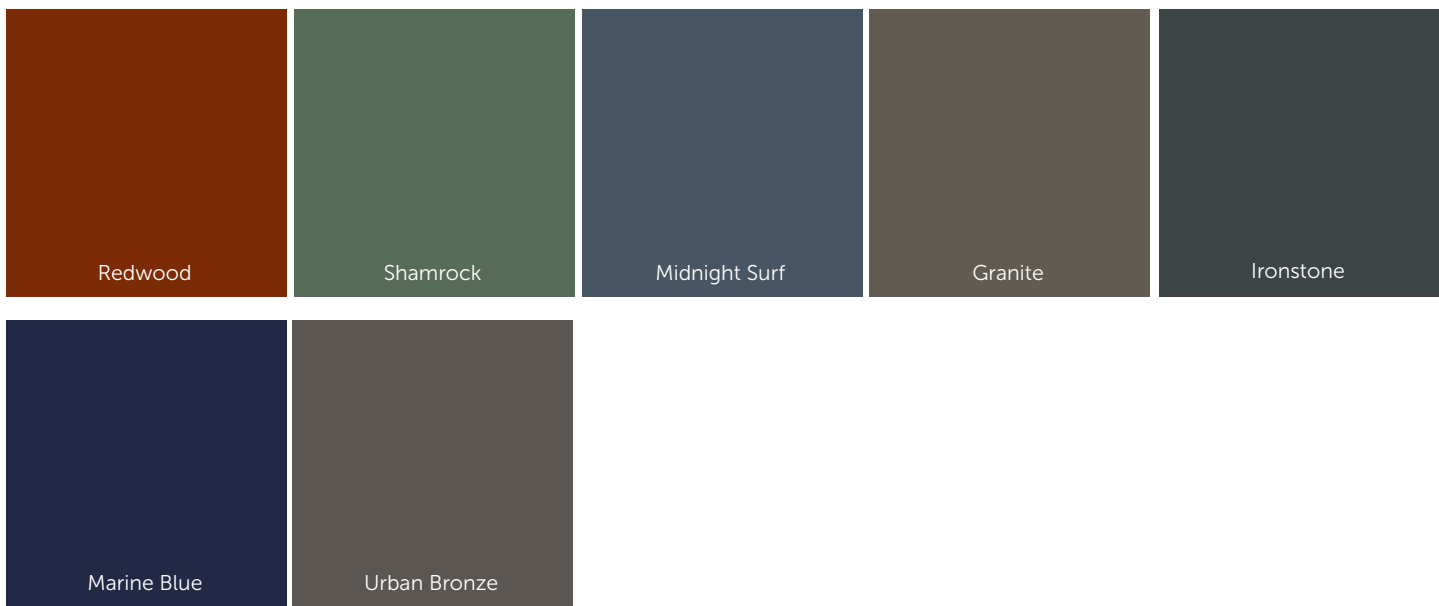
Color is crucial to how your siding presents itself. So we pay a lot of attention to what's trending and what works. Choosing your own colors can be fun, but a bit overwhelming. So we created a color combination tool to help. Get ideas and tips at [royalbuildingproducts.com/color-style/royal-color-combinations](https://royalbuildingproducts.com/color-style/royal-color-combinations).

We develop our wide range of colors to fully express design when they're fresh, and years down the road, engineering our siding pigments to deliver vibrant curb appeal, resist fade and fend off elements day after day.

- **Our proprietary Chromatix® technology color protection effortlessly maintains the look you create in a challenging outdoor environment.**
- **Infrared-reflecting pigments reduce heat buildup**
- **UV formulation with mineral-based pigments keep siding colors from fading**



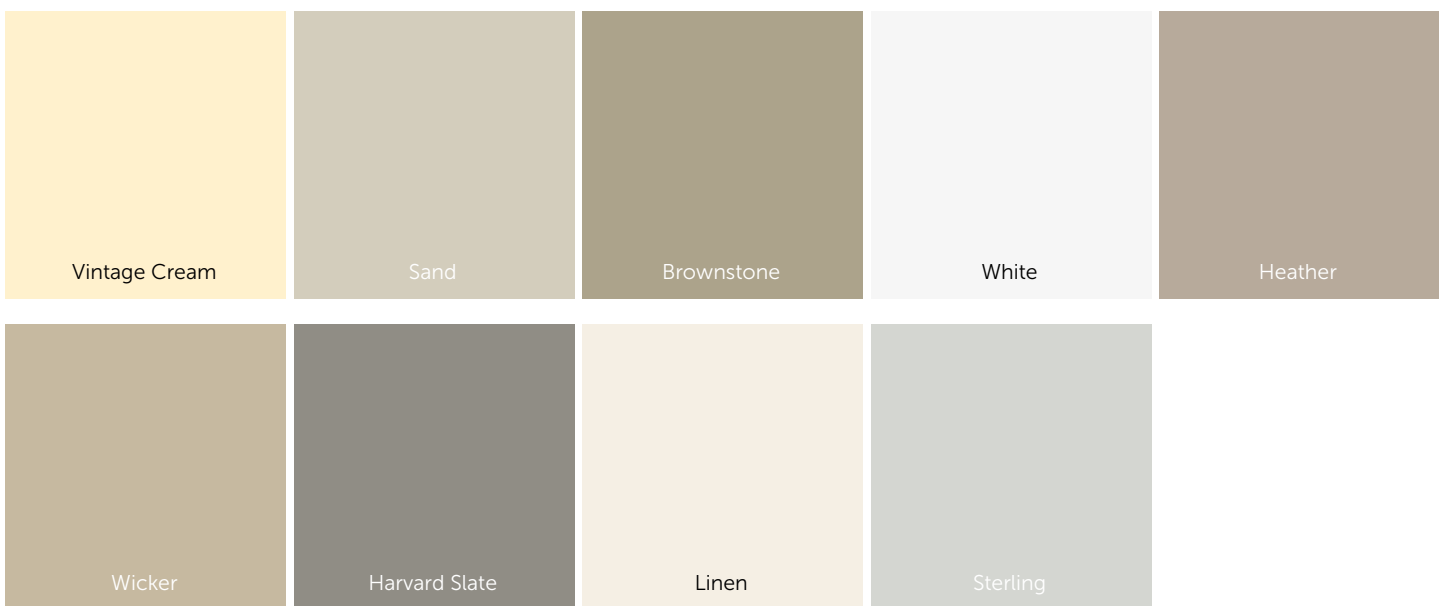
Colorscares® Dark Colors



Colorscares® Premium Colors



Colorscares® Traditional Colors



Actual siding color may vary slightly from printed brochure.  
Ironstone, Marine Blue, and Urban Broze available in Board & Batten only.

# CHOOSE YOUR FAVORITE STYLE OF **ENERGY EFFICIENCY.**

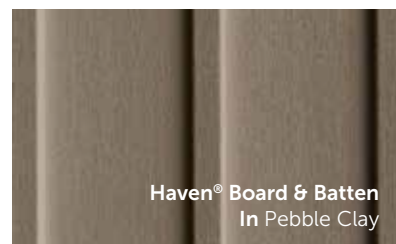
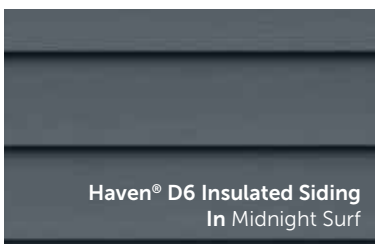
Haven® Siding comes in horizontal and Board & Batten styles that vary by width and pattern. They all capture the look of natural wood in their own way, while insulating your home from moisture and noise, and defying the effects of time, wear and tear.

- Available in flat face D7, D6 and Board & Batten panels that mimic real wood siding
- D6 profiles available in longer 16' panels for smoother, straighter walls
- Beautiful low-gloss, authentic-looking woodgrain
- EPS foam offers significantly more insulating power than fiber cement, wood, engineered wood or brick
- Built with TXL™ Lamination for superior bonding
- Designed to withstand hurricane-force winds up to 160 mph

## **A SUSTAINABLE CHOICE** IS EVEN BETTER.

Not only is Haven Siding available in a wide selection of colors and profiles, it's also remarkably green. Lightweight, yet durable, it never requires painting or staining. For Haven, sustainability is a lifestyle, not a fad. Our facilities recycle virtually all scrap materials during the manufacturing process and Haven Siding was designed so that when cut into, no hazardous materials are emitted during installation. From our facility to your home, our siding is a safe and sustainable option to choose.

- Manufactured from recyclable and recycled materials
- 1/2 the environmental impact of fiber cement







Haven® D6 Insulated Siding In Sterling

# LOSE THE MAINTENANCE, GAIN THE WEEKEND.

All of our offerings are extremely low maintenance and require no painting. Compare that to competitive technologies like wood, fiber cement and engineered wood, which all require painting at some point in their lifetimes.

- **Virtually maintenance free**
  - **Never needs painting**
  - **Won't flake, chip, rot or sag**
- 

# LIVE EASY FOR THE LONG HAUL.

Our Double Lifetime Warranty provides full coverage to both the first and second owner, while other vinyl manufacturers often prorate their warranties for the second owners. Our warranty is facilitated by the strength of our innovation and technology, which creates real peace of mind and can equate to improved resale value for the first owner.

- **Industry-leading Double Lifetime Warranty**
- **Strong resale value**

# ACHIEVE YOUR DREAM HOME.

Achieving the exterior that expresses your home the way you want it takes time, thought and the right combination of siding, trim, accents, color and dimension. But the experience doesn't have to be painstaking or frustrating.

Use our website to find resources for guidance and inspiration, like these:

## **HomePlay™ by Westlake Royal™**

Mix and match siding and trim combinations before you commit

## **Inspirational Photos**

See beautiful examples of home styles and colors

## **Color Design Guide**

Immerse yourself in valuable information and ideas

## **Free Samples**

Get a hands-on look at our siding

## **LiveAbode™ Online Design Magazine**

Trending ideas and tips all year long





# BOUNDLESS™

Where some see boundaries, Westlake Royal Building Products™ sees opportunities to drive innovation, elevate design and deliver solutions that redefine the industry. Our comprehensive selection of products, materials and widely expressive color palettes and textures meet any home demand—inside and out, East Coast to West. Giving everyone the tools and technology to transform spaces into anything they want. This is our mission. And it's Boundless™.



SIDING & ACCESSORIES

TRIM & MOULDINGS

ROOFING

STONE

WINDOWS

OUTDOOR LIVING

