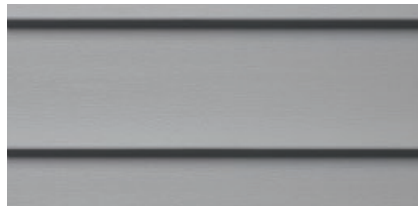


MASTIC[®]
by  **Ply Gem**



STRUCTURE
HOME INSULATION SYSTEM™

MAKE MORE POSSIBLE.





STRUCTURE

HOME INSULATION SYSTEM™

Structure Home Insulation System not only covers exterior walls with a layer of continuous insulation, it also covers problem areas around windows, doors and corners with a range of insulated accessories.



INSULATED

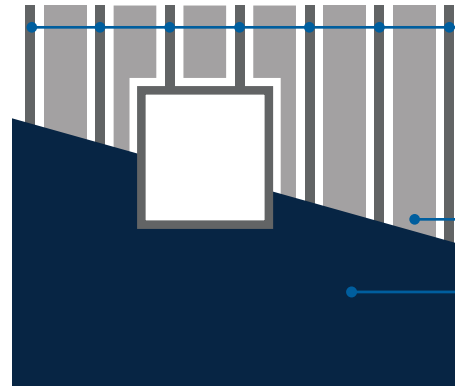
COMFORT IS A THICK LAYER OF INSULATION SURROUNDING YOUR HOME.

It's being warm in winter and cool in summer. It's keeping unwanted noise out. It's saving energy year-round. Most homes have insulation between the studs in exterior walls. But heat can escape in winter (and enter your home in summer) through gaps and holes around windows, doors and across wall studs.



Structure Home Insulation System Single 7" in White

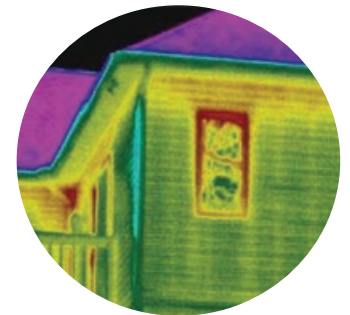
STUDS IN YOUR WALL TRANSFER HEAT. COVERING THEM WITH INSULATION SAVES ENERGY.



Studs create a thermal bridge for heat to escape in winter and enter your home in summer. Because studs can represent up to 25% of the wall surface, it's like having an entire wall without significant insulation.

Insulation between the wood studs in an exterior wall.

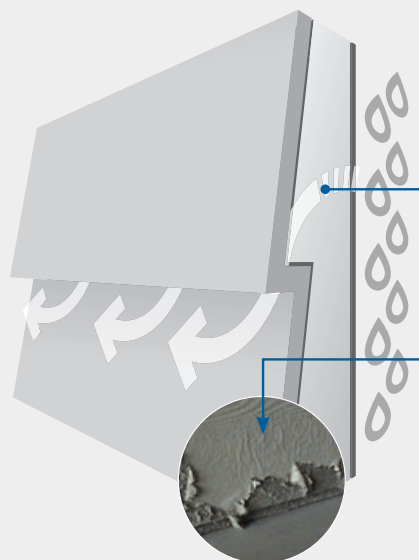
Structure Home Insulation System covers the entire wall with a thick layer of insulation to prevent thermal bridging.



Thermal bridging through the studs and wall intersections is revealed with an infrared camera.¹

¹Side-by-Side, All Siding Isn't Created Equal, Page 3, by Insulated Siding with Fullback Technology™, Progressive Foam.

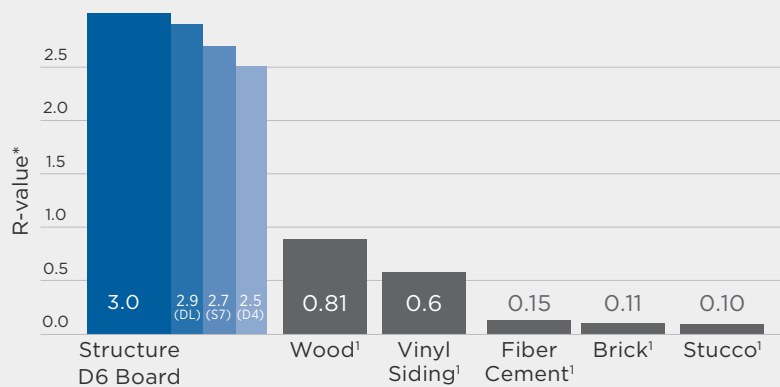
STRUCTURE HOME INSULATION SYSTEM HAS GREATER INSULATING POWER THAN OTHER CLADDING OPTIONS.



BREATHABLE INSULATION FOR A HEALTHIER HOME

EPS foam is a breathable material that allows water vapor to escape so it doesn't accumulate and cause problems in your walls.

Helps prevent mold and mildew growth caused by moisture buildup under the siding. Moisture damage is mostly hidden behind the cladding, but this example of fiber cement shows visible deterioration on the surface.



*R-value means resistance to heat flow. The higher the R-value the greater the insulating power.

¹ Table 5-1 of the ASHRAE Fundamentals Handbook

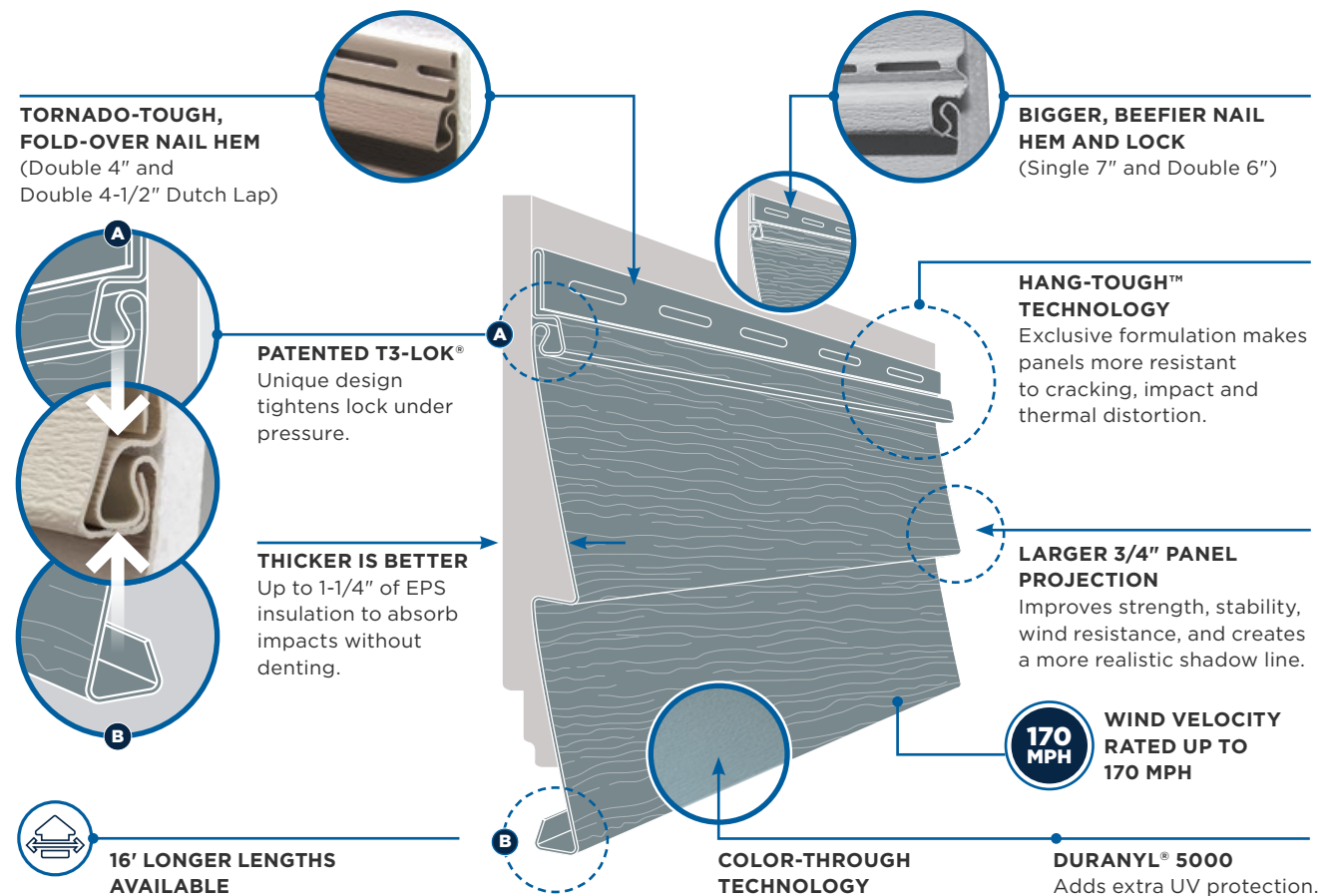


STRONG

STRENGTH IS HANGING TOUGH IN HIGH WINDS.

It's not warping in extreme heat or cracking in freezing temperatures. It's absorbing hits from hail and foul balls. It's lasting beauty.

The EPS foam bonded to our panel acts as a shock absorber to provide up to **300% more impact resistance** than standard vinyl siding. In testing, Structure Home Insulation System withstood hammer blows that damaged lesser siding products.





Structure Home Insulation System™
Double 4.5" Dutch Lap in Linen

SUSTAINABLE

SUSTAINABILITY IS USING LESS ENERGY TO HEAT AND COOL YOUR HOME.

It's using recycled materials to conserve resources. It's protecting your home without polluting the environment. Structure withstood hammer blows that damaged lesser siding products.

Structure Home Insulation System can help you meet your sustainable building goals. **It's engineered to last a lifetime.**



MADE FROM ABUNDANT NATURAL RESOURCES

The vinyl in our panels is derived from two natural resources: salt (57%) and natural gas (43%). Additives such as stabilizers and antioxidants increase durability and enhance performance.



IT NEVER NEEDS PAINTING OR STAINING

And its thick layer of insulation boosts the R-value of your exterior walls, reducing energy consumption and helping to shrink your carbon footprint.

STRUCTURE PROFILES



D6 & D6^L

**DOUBLE 6" &
DOUBLE 6" LONG LENGTH**
Traditional Lap
R-Value: 3.0

S7

SINGLE 7"
Traditional Lap
R-Value: 2.7

D4

DOUBLE 4"
Traditional Lap
R-Value: 2.5

DL4.5

DOUBLE 4-1/2"
Dutch Lap
R-Value: 2.9

STRUCTURE COLOR KEY

DEEP COLORS	D6	D6 ^L	S7	D4	DL4.5
Autumn Harvest	•	•			
Deep Granite	•	•			
English Wedgewood	•		•		•
Misty Shadow	•	•			
Montana Suede	•	•	•		•
Quiet Willow	•	•	•		•
Rugged Canyon	•	•	•		•
Russet Red	•	•			

CLASSIC COLORS	D6	D6 ^L	S7	D4	DL4.5
Corn Silk	•				
Everest	•	•	•	•	•
Harbor Grey	•	•	•	•	•
Pebblestone Clay	•	•	•	•	•
Scottish Thistle	•	•	•	•	•

LIGHT COLORS	D6	D6 ^L	S7	D4	DL4.5
Almond	•		•	•	•
Cameo	•		•	•	•
Classic Cream	•		•	•	•
Desert Sand	•	•	•	•	•
Linen	•		•	•	•
Sage	•		•	•	•
Sandtone	•	•	•	•	•
Silver Grey	•		•	•	•
Victorian Grey	•	•	•	•	•
Wicker	•	•	•	•	•
White	•	•	•	•	•

Due to printing limitations, colors may not be exactly as shown. Refer to actual sample and color chips for best match.

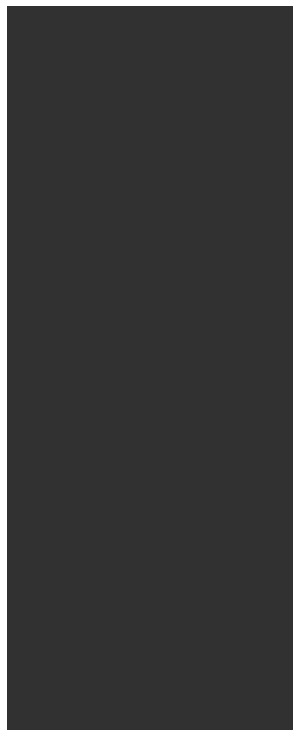
WORRY-FREE

PEACE OF MIND IS LASTING BEAUTY

It's the end of costly painting and repairs. It's a trusted brand that stands behind its products. It's knowing you made the right choice.

When you combine lasting beauty with a lifetime of low-maintenance and greater comfort, it's hard to beat. Add up the savings on painting, repairs and monthly energy bills and Structure Home Insulation System looks even better. To learn more, ask your Mastic contractor for color samples and product specifications.





LIFETIME WARRANTY

Structure Home Insulation System is backed by our V.I.P. Limited Lifetime Warranty, which covers against manufacturing defects, excessive fading and hail damage for as long as you own your home. To protect your investment, the warranty is transferable in the event you sell your home (see warranty for details).



THIRD-PARTY TESTED FOR QUALITY

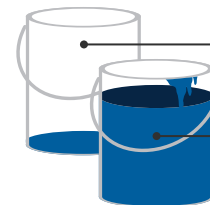
In addition to our own quality controls, Structure Home Insulation System is tested and inspected by a third party for color retention, consistency, weatherability, impact strength and windload resistance (ASTM D6864, D3679).

Consult the VSI website at vinylsiding.org for a current list of certified products and colors.



NEVER NEEDS PAINTING OR STAINING

Unlike wood, stucco or fiber cement, Structure Home Insulation System never needs painting or staining, which saves you time and money year after year.



COMPARE MAINTENANCE COSTS

Structure: \$5
(just soap and water)

Other cladding options: up to \$5,000
(Based on typical prep, caulking and repainting of the average home)

ACCESSORIES



Structure Home Insulation System™ Double 6" and Cedar Discovery Double 7" Perfection Shingles in Everest



FINISH THE HOME WITH STYLE AND CHARM DETAILED TOUCH.

Choose the distinctive detailing of lineals and corner posts to add a touch of elegance to your home's exterior. For more flair, consider adding the traditional beauty of crown molding to your soffit. Each accessory is specifically designed for use with the Structure Home Insulation System for a cleaner look and a uniquely detailed touch.

OUTSIDE CORNERS

Wider 5" corners add drama and substance. Color options add character and distinctive style.



5" Corner Lineal with EPS Foam and matching Corner Starter and Lineal



5" Corner Lineal with EPS Foam and contrasting Corner Starter and Lineal



4" Corner Post with EPS Foam

WINDOW FINISH

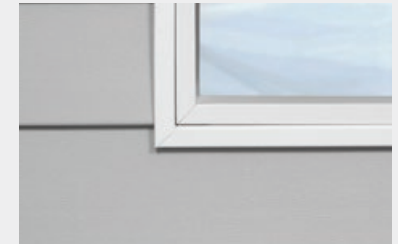
Our wider lineals add authentic architectural detail around windows and doors, and at corners.



3-1/2" Window and Door Casing Lineal with EPS Foam



2-1/2" wide Window Casing Trim



All-Purpose J-Channel Window Finish

INSIDE CORNERS

Bring your walls together with an architecturally correct concave inside corner.



1-1/4" Inside Corner Post



The Total Designed Exterior

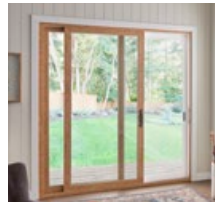
Ply Gem delivers the industry's most comprehensive portfolio of designed exterior solutions—all meant to work together seamlessly to elevate curb appeal and provide enduring beauty to homes.



SIDING



WINDOWS



PATIO
DOORS



STONE
VENEER



FENCE &
RAILING



SHUTTERS



TRIM



METAL



ACCESSORIES



VISUALIZE YOUR TRANSFORMATION

Are you ready to see what's possible for your home? With our Ply Gem® Home Design Visualizer tool, it's easy to begin designing your dream home. Bring your vision to life at mastic.com/visualizer.

GET STARTED

Simply snap a photo and go, or jump-start your imagination with some of our sample homes.

ADD COLOR + VISUALIZE

Explore expert insights on color and accents that will broaden your perspective on what's possible with your home exterior renovation.

MASTIC[®]

by  Ply Gem

MAKE MORE POSSIBLE.

Mastic by Ply Gem is backed by the resources and reach of Cornerstone Building Brands, the nation's largest manufacturer of exterior building products, and supported by a team of dedicated professionals who provide an unrivaled level of experience and expertise to our nationwide network of distributors.



We reserve the right to alter, modify or delete items from time to time without notice. Due to printing limitations, colors may not be exactly as shown. Contact your distributor or sales representative for actual product and color samples.



MASTIC.COM | 800-962-6973
5020 Weston Parkway, Cary, NC 27513

© 2024 Mastic Home Exteriors Inc, part of **Cornerstone Building Brands, Inc.**
ALL RIGHTS RESERVED. 7601093611101/RevD/MS/CG/0624



PART OF THE CORNERSTONE BUILDING BRANDS FAMILY | SIDING | WINDOWS + DOORS | SHUTTERS | METAL, TRIM + ACCESSORIES | STONE VENEER | FENCE + RAILING